



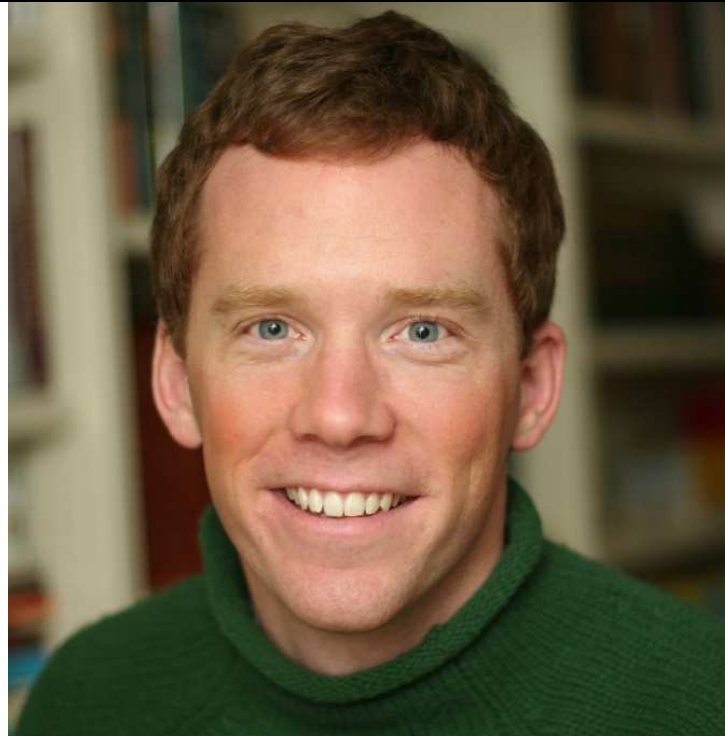
Issues: blown highlights, loss of detail, and a pink color cast.

Corrections: maintained high-key concept while recovering detail in light areas, remove pink color cast, replacing background to separate it from the subject to make him pop.



Issues: flat lighting due, white background; blue cast to skin tones, crop too wide, minor blemishes, and shallow tonal range.

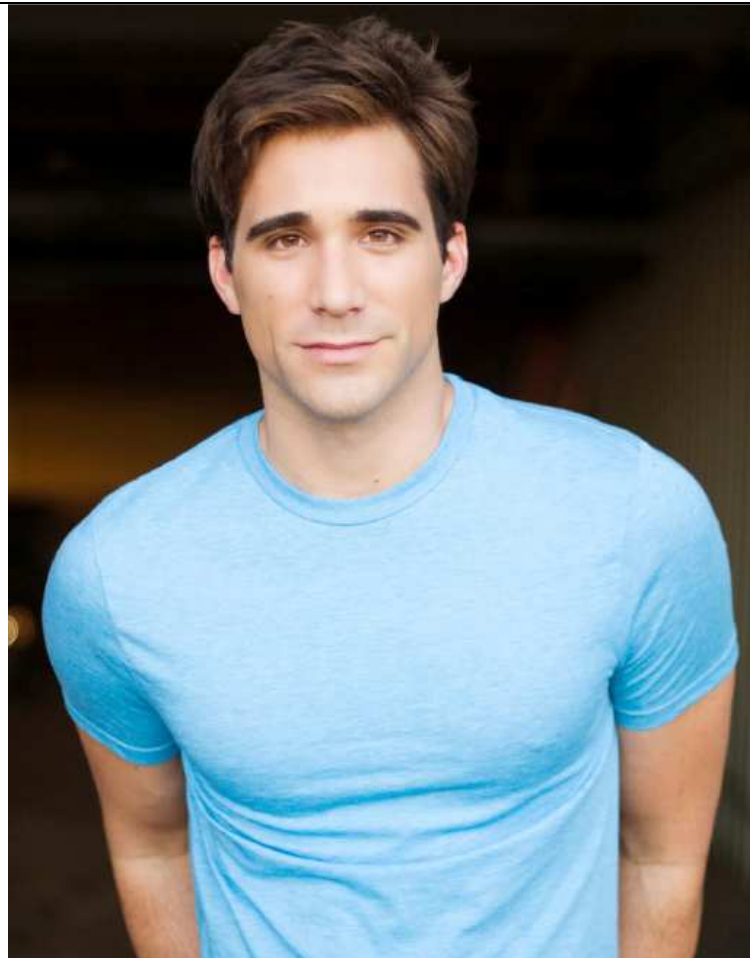
Corrections: crop tightened, removed blue color cast, warm skin tones, added gradient to background for added dimension, increased facial tonal range, removed blemishes



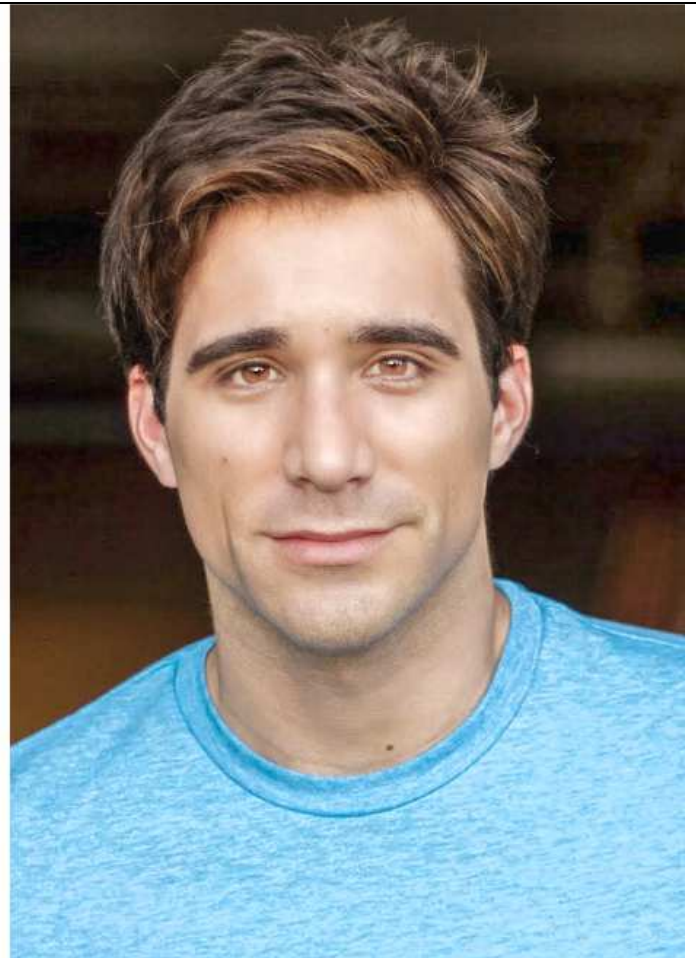
Issues: distracting background, uneven skin tones, excessive red tones in the skin, and soft details throughout.



Corrections: Replaced background, corrected skin tones and color, increased detail, and added more life to eyes.



Issues: overexposed, too much contrast, loss of features and detail, cropped to wide



Corrections: cropped to feature face, reduced contrast, recovered details in skin, eyes, and hair.



Issues: landscape orientation, overexposed, makeup visible.

Corrections: cropped to portrait, darkened background, recovered blown out highlights on face, corrected visible makeup, added focus and color to eyes.



Issues: Underexposed, flat skin tones, dead eyes.

Corrections: corrected exposure, even skin tones, brightened eyes.



Issues: flat, featureless background, poorly masked extraction, cropped too wide, too much red in skin tones.



Corrections: cropped, replaced background and corrected masking, removed blemishes and evened out skin tones, add color and brighten eyes, added highlights to hair.



Issues: landscape orientation, overexposed, loss of details, washed out colors, blue cast



Corrections: cropped to portrait orientation, replaced background to pop subject, removed color cast, added detail, added saturation.



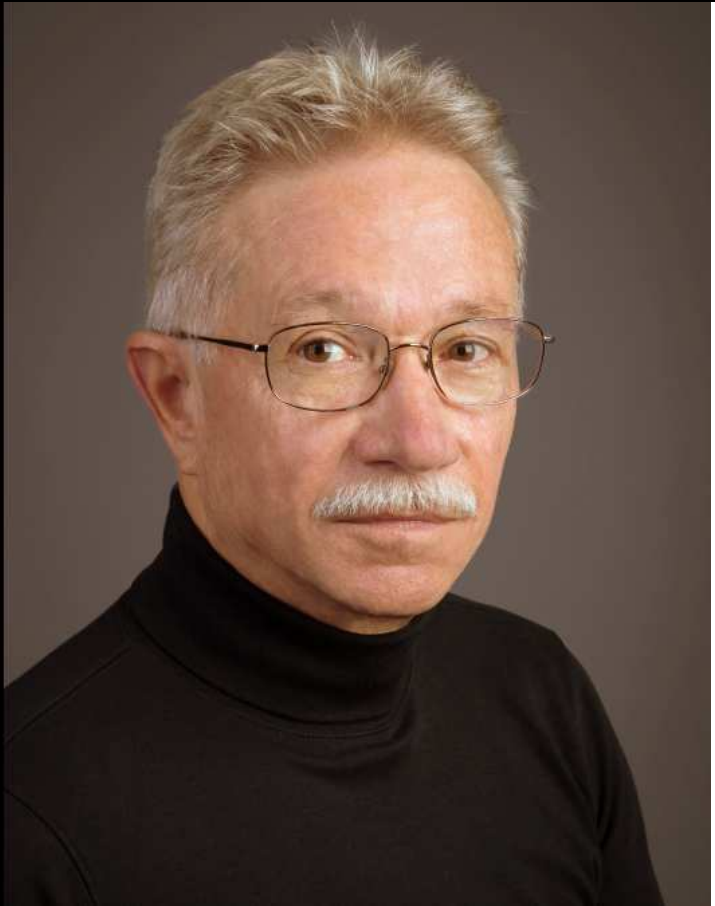
Issues: featureless background, blurred face, odd body position creates loss of back shoulder, focus on forward shoulder, loss of detail in hair, eyes in shadow.

Corrections: replaced background for more pop, cropped tighter to reduce shoulder issues; sharpened face, extracted detail in eyes and hair, balanced skin tone color.



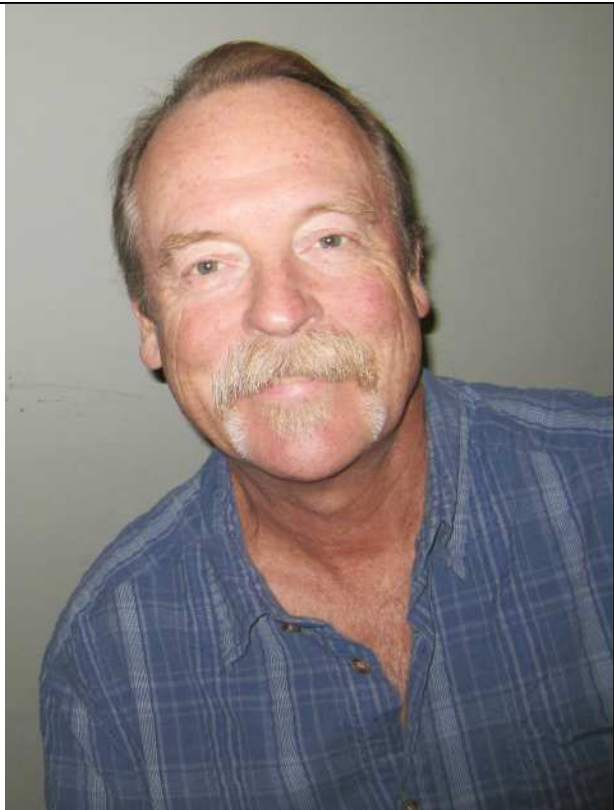
Issues: overpowering white background, flat lighting on face, loss of detail in eyes, cropped too wide.

Corrections: replace background, crop tighter, increase tonal range on face, add brightness to eyes and teeth, correct skin tones.



Issues: red color cast to entire image, weak tonal range, background color too similar to subject tones, cropped too wide.

Corrections: darkened background and removed redness, removed color cast from subject, increased brightness in eyes, cropped tighter.



Issues: cropped too wide, unflattering flash lighting, harsh shadows, unattractive background, uneven skin tones, washed out eyes

Corrections: crop closer, replace background, correct lighting, even out skin, reduce redness, sharpen and brighten eyes.



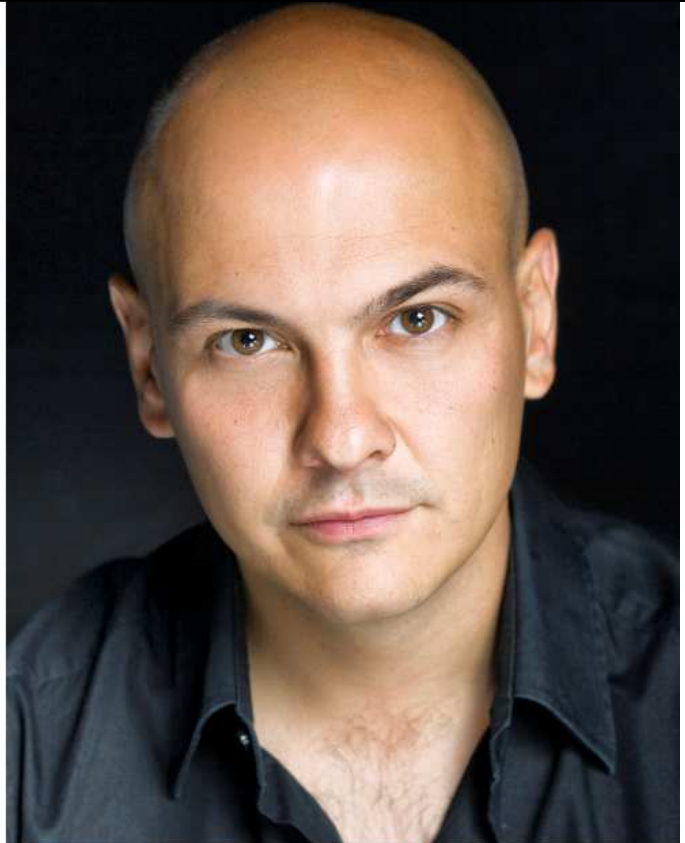
Issues: Underexposed, uneven skin tones, dead eyes.



Corrections: corrected exposure, even skin tones, brightened eyes.



Issues: loss of detail in darks creates "floating" head; washed out features and skin, unnatural pallor



Corrections: increased tonal and color range, added light in eyes, added detail in shirt.